

DOTHILL NEWS



24.03.25

Don't forget to check the school website for regular updates.

www.dothillprimaryschool.co.uk

Check out our Facebook page: Dothill Primary School, Telford

Contact school on 01952 386870 or
by email on dothill@taw.org.uk

Dazzling Dotties Weekly Update Attendance Important Dates Reminders Mental Health SEND EYFS Internet Safety

This Week's Dazzling Dotties!



We had more than usual on Friday because we had a big group of girls from year 6 who helped at our girls' football day; a group of dancers who have been very successful in a competition; and of course, our wonderful nominees who have made their teachers so proud with their hard work. Well done to you all!

What have we been up to...?

Last week was super busy as usual! Governors met to ensure our school continues to grow and develop. We discussed the curriculum, how well the children are progressing, and how our school continually strives to improve and deliver a great education to our school community. Thank you to all those who contributed to our parent survey. Details and outcomes of this will follow in due course.

Dothill Cup: This was awarded to Y3 for working so hard and impressing all their staff. However, it is fair to say that across school I have seen nothing but super hard work in all classes... this Friday will be a hard choice for sure!

Dates for your diary

24.3.25	Year 2 Nature Reserve
27.3.25	Telford Sings (Choir Event)
2.4.24	Year 4 Easter Workshop (All Saints)
11.4.25	Break up for Easter
28.4.25	Summer Term begins

Ready
Respectful
Safe

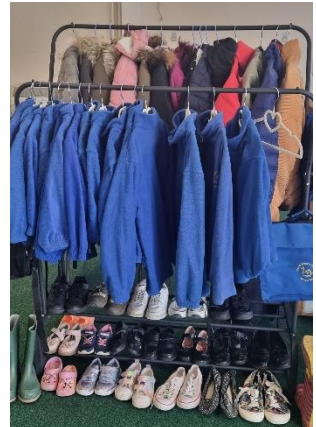
BE YOUR BEST

Reminders / News

Our new **UNIFORM SHOP** is now up and running! It is located just off the car park and will be open three afternoons each week: **Monday, Wednesday and Friday between 3:10 and 3:30.**

In here, you will find spare pre-loved uniform should you need anything, and our pastoral team will be available to support you should you have any other concerns you would like to talk about.

We are so grateful for all pre-loved items you may wish to donate, including school shoes, trainers and coats. Any donations of new pants and socks are also always so welcome. All items really are such a support to our school community.



Mental Health

Mental health helplines

If you need to talk right now, there are many helplines staffed by trained people ready to listen. They won't judge you and could help you make sense of what you're feeling.

Mind support line

Call Mind's support line on 0300 102 1234.

This is a safe space for you to talk about your mental health. Our advisors are trained to listen to you and help you find specialist support if you need it.



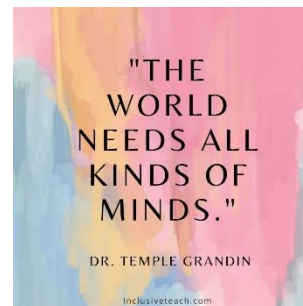
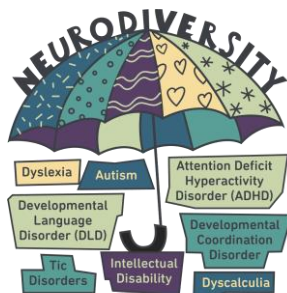
Mind are open 9am to 6pm, Monday to Friday (except bank holidays).

Mind have a great website that offers lots of guidance and support

[How to seek help for a mental health problem - Mind](#)

SEND

Last week was Neurodiversity Week, a celebration of the talents and skills of neurodivergent individuals. Their Resource Hub has many interesting articles, links and other items which you may find helpful. You can visit via <https://www.neurodiversityweek.com/resource-hub> or by scanning the QR code below.



We are very pleased to be able to offer a school SEND coffee morning on Monday 7th April, from 8:30am – 10:00am. It will be on a drop-in basis, but please let us know if you are able to attend using the email address dothill.primarysend@taw.org.uk.

EYFS

Loose Parts Play

Loose parts play encourages children to be creative and to explore the world around them. Children naturally use items around them to play with. When children collect bits and pieces and create something new, it boosts their creative thinking skills, encourages problem solving and increases natural curiosity.

We use loose parts open ended resources throughout EYFS to improve our maths skills, make patterns, retell stories, develop speaking and listening through collaborative play and to make some beautiful big and small creations both inside and outside the classroom. We encourage children to do the same at home! Perhaps you can collect some loose parts whilst walking home from school or in the woods and create a picture or tell a story using them.



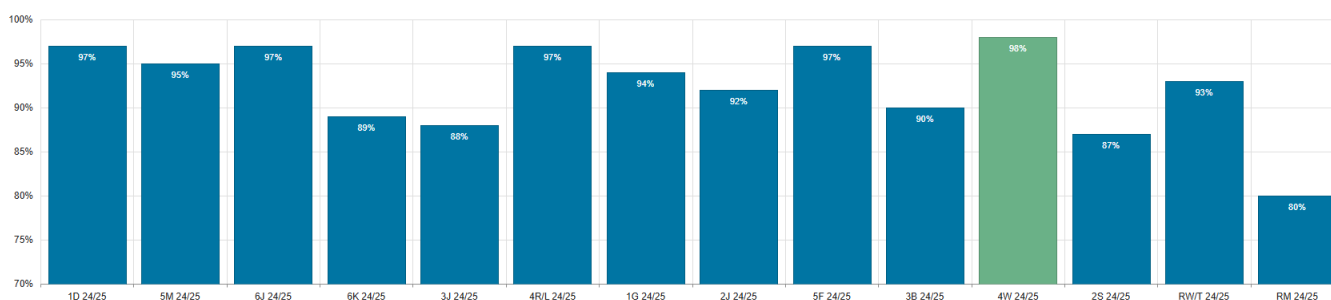
This week we have been reading 'Superworm' by Julia Donaldson. The children are enjoying creating minibeasts using loose parts in our outdoor space.



Internet Safety

Attendance

A huge well done to 4W with 98% attendance last week. They are followed very closely by 1D, 4RL, 5F and 6J with 97%. All these classes have beat the school target of 96.5%. Well done to all the children in those classes. We do however understand that children sometimes need to be off school for illness and this is totally understandable. They should remain at home if too poorly for school.



Last week we shared with you the warnings that are given if school has concerns around attendance. If warning do not help in improving attendance, we will then move onto to sanctions for low attendance.

Sanctions for Attendance

Penalty Notices

The headteacher, local authority or the police can fine parents for the unauthorised absence of their child from school, where the child is of compulsory school age, by issuing a penalty notice.

If the school issues a penalty notice, it will check with the local authority before doing so and send it a copy of any penalty notice issued.

Before issuing a penalty notice, the school will consider the individual case, including:

- Whether the national threshold for considering a penalty notice has been met (10 sessions of unauthorised absence in a rolling period of 10 school weeks)
- Whether a penalty notice is the best available tool to improve attendance for that pupil
- Whether further support, a notice to improve or another legal intervention would be a more appropriate solution

- Whether any obligations that the school has under the Equality Act 2010 make issuing a penalty notice inappropriate

A penalty notice may also be issued where parents allow their child to be present in a public place during school hours without reasonable justification, during the first 5 days of a suspension or exclusion (where the school has notified the parents that the pupil must not be present in a public place on that day).

Each parent who is liable for the pupil's offence(s) can be issued with a penalty notice, but this will usually only be the parent/parents who allowed the absence.

The payment must be made directly to the local authority, regardless of who issues the notice. If the payment has not been made after 28 days, the local authority can decide whether to prosecute or withdraw the notice.

If issued with a first penalty notice, the parent must pay £80 within 21 days, or £160 within 28 days.

If a second penalty notice is issued to the same parent in respect of the same pupil, the parent must pay £160 if paid within 28 days.

A third penalty notice cannot be issued to the same parent in respect of the same child within 3 years of the date of the issue of the first penalty notice. In a case where the national threshold is met for a third time within those 3 years, alternative action will be taken instead.

Notices to Improve

If the national threshold has been met and support is appropriate, but parents do not engage with offers of support, the school may offer a notice to improve to give parents a final chance to engage with support.

Notices to improve will be issued in line with processes set out in the local code of conduct for the local authority area in which the pupil attends school.

They will include:

- Details of the pupil's attendance record and of the offences
- The benefits of regular attendance and the duty of parents under section 7 of the Education Act 1996
- Details of the support provided so far
- Opportunities for further support, or to access previously provided support that was not engaged with
- A clear warning that a penalty notice may be issued if attendance doesn't improve within the improvement period, along with details of what sufficient improvement looks like, which will be decided on a case-by-case
- A clear timeframe of between 3 and 6 weeks for the improvement period
- The grounds on which a penalty notice may be issued before the end of the improvement period

If you would like support with improving attendance, then please let us know as we are always happy to help.