

Walking to school



Peeler's Tips

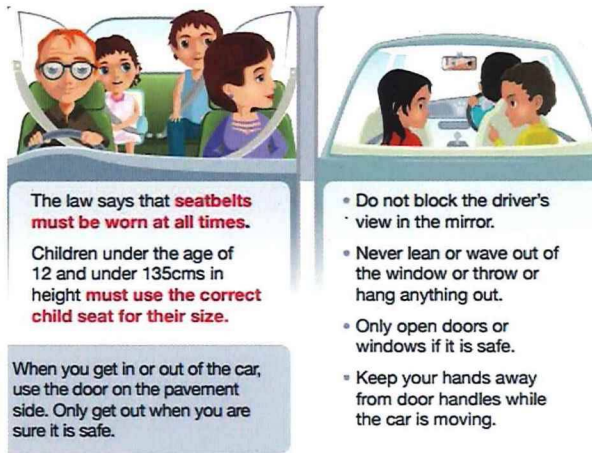
- Where there is a pavement or foot way, use it!
- If you are looking after someone younger than you, hold their hand when you cross the road.
- Wear bright fluorescent clothes on darker days and at night!
- When there is no pavement, walk on the right hand side of the road to face traffic coming towards you.

Crossing

Follow the "Keep 'Em Peeled" code and always use a Zebra or Pelican crossing if one is available.

If your school has a crossing patrol wait until they signal to you to cross the road. Always cross in front of them.

Getting a Lift



KEEP 'EM PEELED with PEELER the POLICE DOG!

Parents

If you need to drive your child to school, for the safety of your child, their friends and the local community we request that you park safely, legally and considerately.

- 'School Keep Clear' restrictions ensure clear sight lines for motorists & children. No vehicle, even blue badge holders, are permitted to stop.
- You should not park on the pavement or grass verge. Obstructing the verge or footway can amount to a criminal offence if the passage of pedestrians is significantly impeded.
- Consider parking further away from the school & walking the last 5 or 10 minutes. Walking to school is good for your health, means less congestion outside schools, improving air quality and safety around your school!

